



[https://youtu.be/fkqRvoS\\_sPU](https://youtu.be/fkqRvoS_sPU)

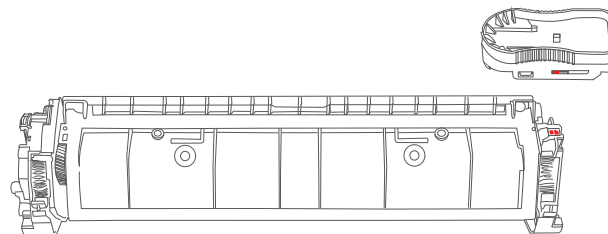
Scan this QR code to  
watch a tutorial clip

All brand names & trademarks are the properties of their respective holders  
and are referred to here for descriptive purposes only.

REPLACEMENT TONER CARTRIDGE OF

# HP CF217A

CHIP TRANSFER GUIDE



[https://youtu.be/fkqRvoS\\_sPU](https://youtu.be/fkqRvoS_sPU)

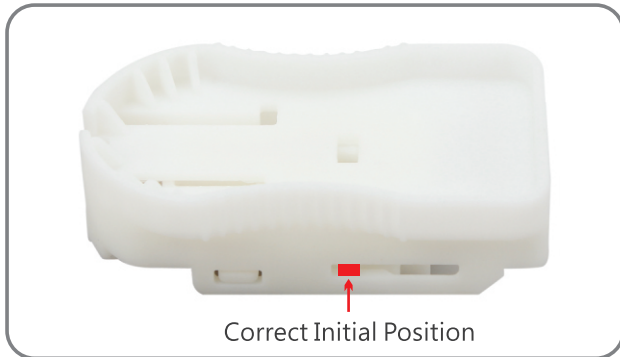
Scan this QR code to  
watch a tutorial clip

## Install the protector

Dear Customer, thank you for choosing our product. Please follow the easy steps to transfer the cartridge chip onto your new toner cartridge, and enjoy high-quality printing!

1. Make sure the chip transporter is in the correct initial position prior chip transfer; during the chip transfer, the transporter should always face upwards.

Chip Transporter



Correct Initial Position

Top Side

2. To avoid toner leaks from used cartridge during the chip transfer, please install enclosed protector onto the used cartridge.

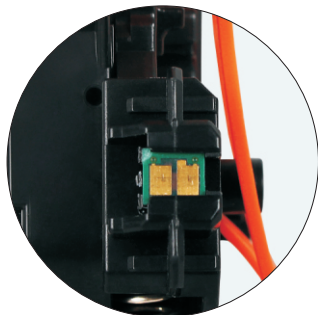


(Figure 2.1)



(Figure 2.2)

## Locate the chip slot



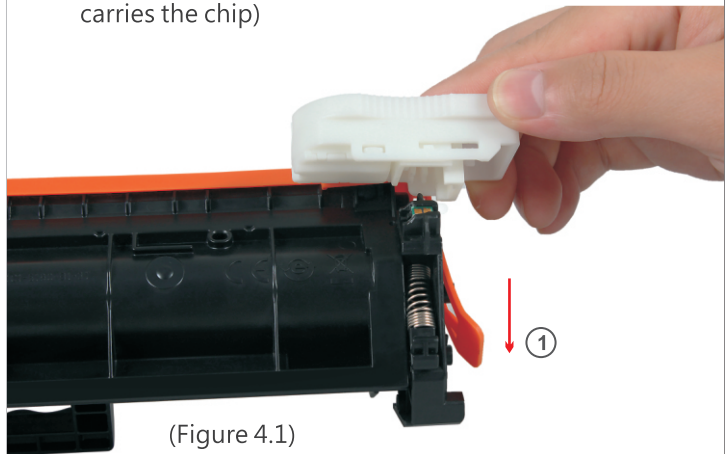
3. Locate the chip slot on one side of your used toner cartridge.



(Figure 3.1)

## Remove the chip

4. Install the chip transporter on the chip slot of your used toner cartridge, and slide it to the left; pull it straight up to remove. (Now the transporter carries the chip)



(Figure 4.1)



(Figure 4.2)

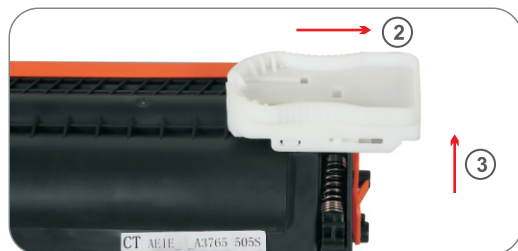
## Transfer the chip

5. Install the chip transporter on the chip slot of your new toner cartridge, and slide it to the right; pull it straight up to remove.

Now you can take off the protector and the new toner cartridge's ready to print.



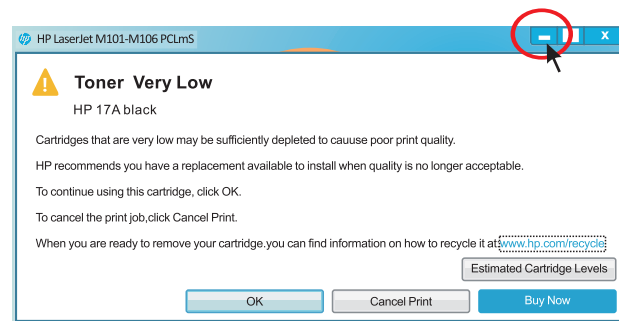
(Figure 5.1)




(Figure 5.2)

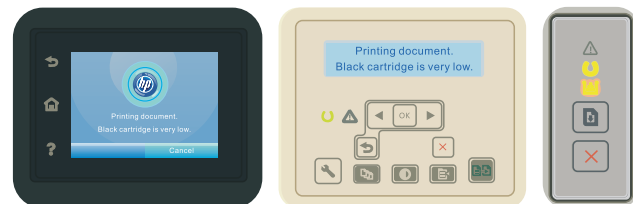
## Notice

6. During printing, if a dialogue window pops up, please click minimize (button) and proceed to print.



(Figure 6.1)

7. If the panel, or printer screen shows the message "Black cartridge is very low", or the indicator light  is on, please disregard it and continue to print.



(Figure 7.1)